

LC-UPC Unibody

Connector

| SPECIFICATION | SINGLEMODE | MULTIMODE |
|------------------------------|--|----------------|
| Insertion Loss | 0.08dB typical UPC 0.10dB typical APC 0.04dB typical Super Low Loss | 0.15dB typical |
| Return Loss | ≥55dB typical UPC ≥65dB typical APC | |
| Durability | < 0.2dB typical change,500 matings | |
| Operating Temperature | -40 to +75°C | |
| Ferrule Hole Sizes | 125.5µm +1/-0 Concentricity: ≤ 1µm 126µm +1/-0 Concentricity: ≤ 1µm 125µm +1/-0 Concentricity: ≤ 1µm | 127µm |



BTW Boot



2.0mm Round



2.0mm Round Duplex

| CODE | TYPE | FERRULE I.D. | HOUSING | BOOT | COLOR | |
|------|------------|--------------|---------|------|-------|---|
| 93 | LC Unibody | 1 | 1 | 1 | 1 | |
| | | 2 | 2 | 4 | 2 | |
| | | | 153 | | 5 | 3 |
| | | | 251 | | 6 | 4 |
| | | | 159 | | | 5 |

ORDER CODE example:..

931 - 153 - 141

APPLICATIONS

- Telecom / Datacom
- Local Area Networks (LANs)
- CATV
- FTTX
- Premise Installation
- Gigabit applications (Ethernet, ATM, SONET, etc.)

FEATURES

- Compact, pull-proof design with RJ-45 style interface
- Fully compatible with standard LC products
- Optional anti-snap simplex collar and duplex clip can be used on same connector body, eliminating need to purchase different housing styles
- Boot, housing, strength member, and simplex collar / duplex clip made from V-0 UL-rated material

Note:

As part of the Quality LC Certification Program, established by OFS, the singlemode and multimode LC Unibody Jumper connectors have been independently tested and successfully met pre-screening requirements as well as optical, environmental, mechanical, and end of test criteria for insertion loss, return loss, and ferrule geometry and damage. With this achievement, SENKO became the first member of the LC Connector Alliance authorized by OFS to use the LC Quality Mark.

LC-APC Unibody

Connector



BTW Boot



2.0mm Boot Short



3.0mm boot

| CODE | TYPE | FERRULE I.D. | HOUSING | BOOT | COLOR | |
|------|------------|--------------|---------|------|-------|--|
| 93 | LC Unibody | 1 | 3 | 1 | 6 | |
| | | 2 | | 4 | | |
| | | | 153 | | 5 | |
| | | | 159 | | 6 | |

ORDER CODE example:..

931 - 153 - 366

LC Connector

The HUAKE LC family of singlemode and multimode connectors, adapters and associated components are manufactured under a worldwide license from OFS. The LC is a small form factor (SFF) connector and is ideal for high density applications. A Behind the Wall (BTW) version is available with short connector and boot for ultra-compact requirements.

The LC connector has a zirconia ceramic ferrule measuring 1.25mm O.D. and provides optimum insertion and return loss.* The LC connector is used on small diameter mini-cordage (1.6/1.8/2.0mm) as well as 3.0mm cable. LC Connectors are available in pre-assembled or kit (unassembled) formats. The LC connector family is Telcordia, ANSI/EIA/TIA and IEC compliant.

| SPECIFICATION | SINGLEMODE | MULTIMODE |
|------------------------------|--|----------------|
| Insertion Loss | 0.10dB typical | 0.20dB typical |
| Return Loss | ≥ 55dB typical for singlemode PC | |
| Durability | < 0.2dB typical change, 500 matings | |
| Operating Temperature | -40 to +75°C | |
| Ferrule Hole Sizes | 125.5µm +1/-0 Concentricity: ≤ 1µm 126µm +1/-0 Concentricity: ≤ 1µm 125µm +1/-0 Concentricity: ≤ 1µm | 127µm |

Specifications shown above were obtained using HUAKE recommended products and procedures.

APPLICATIONS

- Gigabit ethernet
- Video
- Active device termination
- Premise installations
- Telecommunications networks
- Multimedia
- Industrial
- Military

FEATURES

- Compact, pull-proof design
- RJ-45 style interface
- Low insertion loss and low back reflection*
- Polarized and color coded (TIA 568-A & ISO 11801)
- UL-rated plastic housing and boot
- Behind the Wall (BTW) style short connector & boot available
- High precision alignment

Note:
When terminated using SENKO recommended procedures.

LC Connector



BTW Boot

2.0mm Jumper Boot

2.0mm Jumper Boot Duplex

| CODE | TYPE | FERRULE I.D. | HOUSING | BOOT | COLOR |
|------|--------------------|-----------------------------------|------------|---------------------|----------|
| 91 | Pre-Assembled, 1pc | 151 SM 125.5µm 35 degree chamfer | 1 SM Blue | 1 1.0mm BTW Boot | 1 White |
| 92 | Unassembled Kit | 152 SM 126µm 35 degree chamfer | 2 MM Beige | 2 2.0mm Jumper Boot | 2 Blue |
| | | 153 SM 125µm 35 degree chamfer | | 6 3.0mm Boot | 3 Black |
| | | 251 MM 127µm 35 degree chamfer | | | 4 Yellow |
| | | 159 SM 125µm Low Loss ferrule 35° | | | 5 Red |

ORDER CODE example:.

911 - 153 - 121

Note:

1. When terminated using SENKO recommended procedures.

2. **Specification for the Low Loss ferrule:**
 • IL 0.03dB typical (mated with master connector)
 • IL 0.05dB typical (mated with random connector)

LC Uniboot

Connector

APPLICATIONS

- Datacenters
- Gigabit ethernet
- Video
- Active device termination
- Premise installations
- Telecommunications networks
- Multimedia
- Industrial
- Military

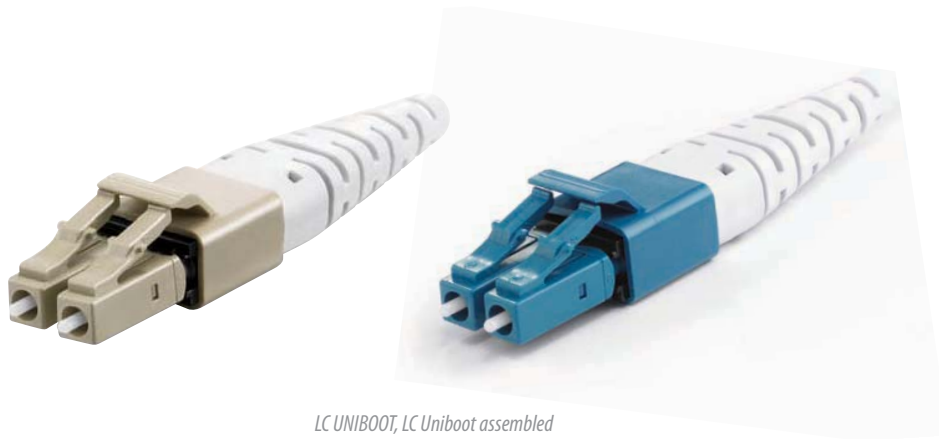
FEATURES

- Compact, pull-proof design
- RJ-45 style interface
- Low insertion loss and low back reflection*
- Polarized and color coded (TIA 568-A & ISO 11801)
- UL-rated plastic housing and boot
- High precision alignment

The HUAKE LC Uniboot is unique design that allows a single round duplex fiber 3mm cable to be used for duplex connector. This compact, easy to terminate connector kit has a simple round crimp design and incorporates standard HUAKE 900µm LC connectors, so you will experience the normal optical performance of our proven LC design.

| SPECIFICATION | SINGLEMODE | MULTIMODE |
|------------------------------|--|----------------|
| Insertion Loss | 0.10dB typical | 0.20dB typical |
| Return Loss | ≥ 55dB typical for singlemode PC | |
| Durability | < 0.2dB typical change,500 matings | |
| Operating Temperature | -40 to +75°C | |
| Ferrule Hole Sizes | 125.5µm +1/-0 Concentricity: ≤ 1µm 126µm +1/-0 Concentricity: ≤ 1µm 125µm +1/-0 Concentricity: ≤ 1µm | 127µm |

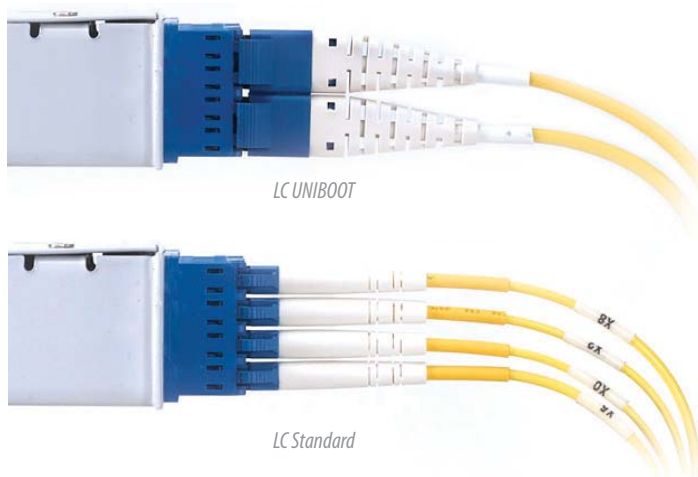
Specifications shown above were obtained using HUAKE recommended products and procedures.



LC UNIBOOT, LC Uniboot assembled

Note:
When terminated using SENKO recommended procedures.

| CODE | TYPE |
|--------------------|--|
| 942-251-221 | LC Uniboot Conn MM (ID127 µm 35d) White Boot |
| 942-151-121 | LC Uniboot Conn SM (ID125.5 µm 35d) White Boot |



LC UNIBOOT

LC Standard

XP Fit Plus

LC Field Installable Connector

The XP Fit Plus is a pre-polished, pre-assembled connector compatible with the standard LC connector. In place of epoxy, an internal mechanical grip gently but effectively holds the fiber in place and can be installed in under two minutes. Without polishing or adhesives, the XP Fit Plus makes field installations quick and easy, eliminating the need for epoxy curing and hand polishing at the work site. The XP Fit Plus comes with an assembling jig and fiber holder, making for an accurate alignment and fiber cleave when terminating the connector.

| SPECIFICATION | SINGLEMODE | MULTIMODE |
|------------------------------|--|-------------------------------------|
| Insertion Loss | 0.2dB typical (PC) and 0.3dB typical (APC) | 0.1dB typical |
| Return Loss | 55dB typical (PC) 60dB typical (APC) | 35dB typical |
| Durability | <0.1dB typical change, 500 matings* | <0.1dB typical change, 500 matings* |
| Operating Temperature | -40°C to +75°C- | -40°C to +75°C |
| Tensile | TIA/EIA 568-B.3 | |
| Intermateability | IEC 61754-4 | |

* Specifications shown above were obtained using HUAKE recommended products and procedures.

APPLICATIONS

- Data Centers
- LAN
- Telecommunications
- Network Monitoring
- FTTH

FEATURES

- Mechanical Splice (index matching gel)
- Highly Stable & Reliable
- Perfect Performance
- Compact Package
- RoHS Compliant
- Finished Connector meets UL94-V0 Flammability Rated

Note:

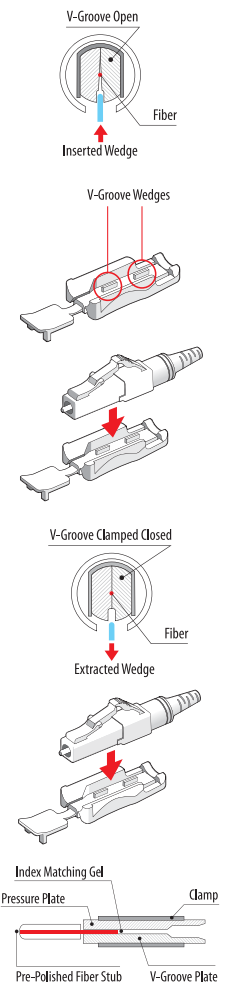
The connector performance specifications include an internal mechanical splice.

XP Fit Plus

LC Connector



| PART NUMBER | DESCRIPTION | HOUSING | BOOT COLOR |
|-------------|---|---------|------------|
| 951-191-111 | XPFit Plus LC Connector SM PC 900µm | Blue | White |
| 951-091-311 | XPFit Plus LC Connector SM APC 900µm | Green | White |
| 951-291-811 | XPFit Plus LC Connector MM 50/125 900µm | Black | White |
| 951-391-211 | XPFit Plus LC Connector MM 62.5/125 900µm | Beige | White |
| 951-491-911 | XPFit Plus LC Connector MM 50/125 10G OM3 900µm | Aqua | White |



LC Adapter

Standard



LC Adapter Simplex



LC Adapter Simplex



LC Adapter Duplex



LC Adapter Duplex

FEATURES

- Compact design
- Telcordia, ANSI, TIA/EIA, and ISO compliance*
- Color coding
- High precision alignment

Note:
When following procedures recommended by SENKO Advanced Components, Inc.

| CODE | TYPE | COLOR | SLEEVE TYPE |
|------|-----------|-------------|---------------------------|
| 999 | 1 Simplex | 1 Blue | 1 Zirconia Straight Split |
| | 2 Duplex | 2 Black | 2 Phosphor Bronze (SM,MM) |
| | | 3 APC Green | |
| | | 8 Beige | |
| | | 9 Aqua | |

ORDER CODE example:.. **999 - 191**

LC Adapter

SC Footprint SNR/JUN



LC Quad Adapter, with SC Footprint, with Flange, Junior-Senior



LC Quad Adapter, with SC Footprint, without Flange, Junior-Senior



LC Duplex Aqua Adapter, with SC Footprint, with Flange, Junior-Senior



LC Duplex Adapter, with SC Footprint, without Flange, Junior-Senior

| CODE | TYPE | COLOR | SLEEVE TYPE |
|------|-------------------------|-------------|---------------------------|
| 999 | 3 Duplex with Flange | 1 Blue | 1 Zirconia Straight Split |
| | 4 Duplex with No Flange | 2 Black | 2 Phosphor Bronze (SM,MM) |
| | 5 Quad with Flange | 3 APC Green | |
| | 6 Quad with No Flange | 8 Beige | |
| | | 9 Aqua | |

ORDER CODE example:.. **999 - 611**

LC Adapter

Symmetrical with SC Footprint - SNR/SNR



LC Quad Adapter, with SC Footprint, with Flange, Senior-Senior



LC Quad Adapter, with SC Footprint, without Flange, Senior-Senior



LC Duplex Adapter, with SC Footprint, with Flange, Senior-Senior



LC Duplex Adapter, with SC Footprint, No flange, Senior-Senior, Singlemode

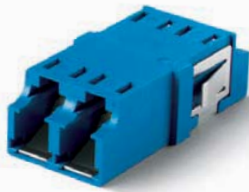
| CODE | TYPE | COLOR | SLEEVE TYPE |
|------|--------------------------|-------------|---------------------------|
| 999 | 3S Duplex with Flange | 1 Blue | 1 Zirconia Straight Split |
| | 4S Duplex with No Flange | 2 Black | 2 Phosphor Bronze (SM,MM) |
| | 5S Quad with Flange | 3 APC Green | |
| | 6S Quad with No Flange | 8 Beige | |
| | | 9 Aqua | |

ORDER CODE example:.. **999 - 5S31**

LC One Piece Adapter

SNR/SNR

HUAKE offers both an external and internal shutters for adapters to shield potentially harmful light. HUAKE's external shutters are made from special materials designed to attenuate a broad range of visible and invisible light, fit easily over existing adapters and provide a guard against debris such as dust and dirt. HUAKE's patented internal shutter is a retractable shutter inside the adapter body and is only actuated by inserting the connector in to the body, designed specifically to prevent end face damage of the ferrule. The internal shutter is fully automatic and provides an alternative to external shutter solutions.



LC One Piece Adapter Duplex, with SC Footprint, without flange, Senior-Senior



LC One Piece Adapter Duplex with Inner Shutter, with SC Footprint, without flange, Senior-Senior

| CODE | TYPE | COLOR | SLEEVE TYPE | SHUTTER |
|------|--------------------------|---------|-------------------|-------------------------------|
| 988 | 3S Duplex with Flange | 1 Blue | 1 Zirconia | N No Shutter |
| | 4S Duplex with No Flange | 2 Black | 2 Phosphor Bronze | A Internal Shutter (w/o mark) |
| | | 3 Green | 3 Zir Dia. | |
| | | 8 Beige | | |
| | | 9 Aqua | | |

ORDER CODE example: **988 - 411 - N**

FEATURES

- Compact design
- Telcordia, ANSI, TIA/EIA, and ISO compliance*
- Color coding
- High precision alignment



LC One Piece Adapter No Weld Type



LC One Piece Adapter Welded Type

The new one piece housing design prevents breaking of the adapter due to the absence of ultrasonic weld construction.

LC One Piece Adapter

SNR/JNR



LC One Piece Adapter Duplex with SC Footprint, with Flange, Junior-Senior



LC One Piece Adapter Duplex with SC Footprint, without Flange, Junior-Senior

| CODE | TYPE | COLOR | SLEEVE TYPE | SHUTTER |
|------|-------------------------|---------|-------------------|-------------------------------|
| 988 | 3 Duplex with Flange | 1 Blue | 1 Zirconia | N No Shutter |
| | 4 Duplex with No Flange | 2 Black | 2 Phosphor Bronze | A Internal Shutter (w/o mark) |
| | | 3 Green | 3 Zir Dia. | |
| | | 8 Beige | | |
| | | 9 Aqua | | |

ORDER CODE example: **988 - 411 - N**

MU Connector

The HUAKE family of singlemode and multimode MU connectors and adapters are fully inter-mateable with NTT-MU style products, and are NTT and JIS compliant.* This small form factor connector is approximately half the size of the SC connector, and has a push-pull style design. The connector features a pre-assembled body and precision molded plastic housing, and a free-floating ferrule measuring 1.25mm O.D. held in place with a precision spring.

Housing and boot are made from UL-rated material. The MU-J style connector is the same as the regular MU connector, but without the outer housing and with a very narrow, short boot for 900 micron fiber, ideal for back panel solutions and high-density situations. HUAKE MU Connectors are available in pre-assembled or kit (unassembled) formats.

| SPECIFICATION | SINGLEMODE | MULTIMODE |
|------------------------------|--|-------------------------------------|
| Insertion Loss | 0.10dB typical | 0.15dB typical |
| Return Loss | ≥ 55dB typical for singlemode PC | |
| Durability | < 0.1dB typical change, 500 matings | < 0.2dB typical change, 500 matings |
| Operating Temperature | -40 to +75°C | -40°C to +75°C |
| Ferrule Hole Sizes | 126µm +1/-0 Concentricity: ≤ 1µm 125µm +1/-0 Concentricity: ≤ 1µm 125.5µm +1/-0 Concentricity: ≤ 1µm | 127µm |

Specifications shown above were obtained using HUAKE recommended products and procedures.

MU One Piece Connector



| CONNECTOR | FERRULE | HOUSING | BOOT TYPE | BOOT COLOR |
|-------------------------|-----------------|----------|-------------------|------------|
| 510 MU Connector | 111 SM: 125.5µm | 1 Blue | 1 2.0mm cable | 1 Blue |
| | 112 SM: 126µm | 2 Black | 2 1.0mm Fiber | 2 Black |
| | 113 SM: 125µm | 3 Red | 4 1.6mm Cable | 3 Green |
| | 211 MM: 127µm | 4 Beige | 5 1.0 Fiber Short | 4 Red |
| | | 5 Brown | | 5 Gray |
| | | 6 Yellow | | 6 Yellow |
| | | 0 MU-J* | | 7 White |
| | | | | 8 Beige |
| | | | | 9 Lavender |

ORDER CODE example: **510 - 111 - 519**

APPLICATIONS

- CATV
- Video
- Active device termination
- Premise installations
- Telecommunications networks
- Local Area Networks (LANs)
- Data processing networks
- Wide Area Networks (WANs)
- Industrial, medical & military

FEATURES

- NTT-MU hardware compatibility
- NTT & JIS compliance*
- Compact, pull-proof design
- High precision alignment
- One piece construction
- Tunable zirconia connector ferrule
- Corrosion resistant body
- UL-rated plastic housing and boot
- Universal Duplex Clip
- Low insertion loss & back reflection*

Note:

1. When terminated using SENKO recommended procedures.
2. Custom configurations available upon request.

MU Connector Kit



MU Kit with 2.0mm Cable boot

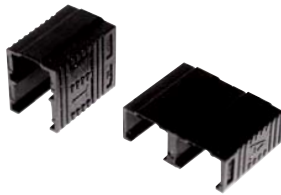


MU Kit with 1.0mm Fiber Short Body

| CODE | FERRULE | HOUSING | BOOT TYPE | BOOT COLOR | |
|------|-----------|-------------|-----------|--------------------------|------------|
| 511 | MU kit | | | | |
| | 101 | SM: 125.5µm | 5 Brown | 1 2.0mm Cable | 9 Lavender |
| | 102 | SM: 126µm | 0 MU-J | 2 1.0mm Fiber Long Body | |
| | 103 | SM: 125µm | | 3 1.0mm Fiber Short Body | |
| 201 | MM: 127µm | | | | |

ORDER CODE example: **511 - 103 - 519**

Universal MU Duplex Clip



| CODE | CLIP TYPE | COLOR |
|------|--------------|----------|
| 512 | 1 Vertical | 12 Black |
| | 2 Horizontal | 15 Brown |

ORDER CODE example: **512 - 116**

MU Connector

Crimp Tool



| CRIMP TOOL CODE | TYPE |
|-----------------|---------------------------|
| CRT | 301 MU Connector |
| | 701 LC/MU Dual Crimp Tool |

ORDER CODE example: **CRT - 301**

APPLICATIONS

- CATV
- Video
- Active device termination
- Premise installations
- Telecommunications networks
- Local Area Networks (LANs)
- Data processing networks
- Wide Area Networks (WANs)
- Industrial, medical & military

FEATURES

- NTT-MU hardware compatibility
- NTT & JIS compliance*
- Compact, pull-proof design
- High precision alignment
- One piece construction
- Tunable zirconia connector ferrule
- Corrosion resistant body
- UL-rated plastic housing and boot
- Universal Duplex Clip
- Low insertion loss & back reflection*

Note:
Custom configurations available upon request.

MU Adapter



Simplex

Duplex

8-Port

| CODE | TYPE | SLEEVE |
|------------|-----------|-------------|
| MUA | 1 Simplex | ZA Zirconia |
| | 2 Duplex | |
| | 3 8-Port | |

ORDER CODE example: **MUA - 1PB**

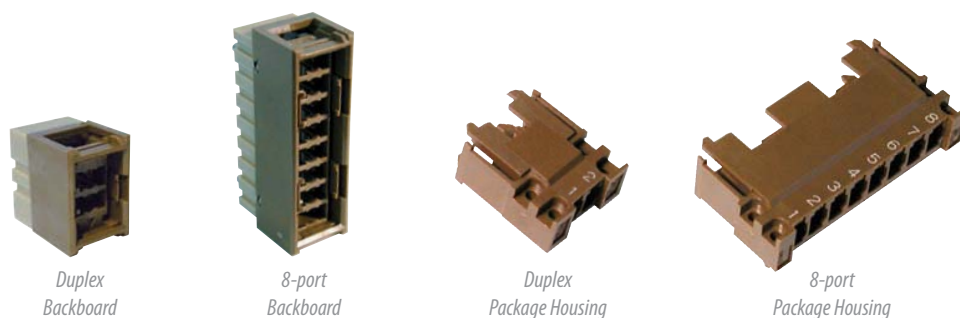
APPLICATIONS

- Fiber optic subscriber network transmission/switching equipment
- CATV
- Active device termination
- Telecommunication networks
- Metro networks
- Local Area Networks (LANS)
- Data processing networks
- Premise installations
- Industrial, military and medical

FEATURES

- Compact design
- NTT-MU hardware compatibility
- NTT & JIS compliance
- High precision alignment
- Low insertion and return loss and back reflection*

MU Backboard and Package Housing



Duplex Backboard

8-port Backboard

Duplex Package Housing

8-port Package Housing

| CODE | TYPE | HOUSING TYPE |
|------------|----------|---|
| MUB | 2 Duplex | 1 Backboard 2.4mm Thickness 2 Backboard 3.2mm Thickness 3 Package Housing |
| | 8 8-Port | |

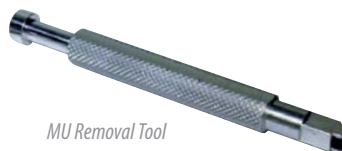
ORDER CODE example: **MUB - 2 - 1**

| CODE | TYPE |
|--------------|------------------|
| MU-SH | MU Sleeve Holder |



MU Sleeve Holder

| CODE | TYPE |
|---------------|-----------------|
| MU-JRT | MU Removal Tool |



MU Removal Tool