

MPO Connector

The MPO connector offers up to 24 times the density of standard connectors, providing significant space and cost savings.

MPO connectors utilize precision molded MT ferrules, with metal guide pins and precise housing dimensions to ensure fiber alignment when mating. The MPO can be mass terminated in combinations of 4, 8, or 12 fiber ribbon cables. The MPO Adapter comes standard in black.

SPECIFICATION	SINGLEMODE	SINGLEMODE SUPER LOW LOSS	MULTIMODE
Insertion Loss	0.25dB Typical (all fibers) 0.75dB Maximum (single fiber) *	0.1dB Typical (all fibers) 0.35dB Maximum (single fiber) *	0.20dB Typical (all fibers) 0.50dB Maximum (single fiber) *
Return Loss	≥ 55dB (8°Angle Polish)	≥ 55dB (8°Angle Polish)	>25dB
Durability	<0.30dB change 500 matings (per EIA-455-21A)	<0.30dB change 500 matings (per EIA-455-21A)	<0.20dB change 1000 matings (per EIA-455-21A)
Operating Temperature	-40°C ~ +80°C		

* As tested per ANSI/EIA 455-171 Method D3.

* As tested per ANSI/EIA 455-171 Method D1.

APPLICATIONS

- Asynchronous Transmission Mode (ATM)
- Gigabit Ethernet
- CATV, Video and Multimedia
- Active Device/ Transceiver Interface
- Premise Installations
- Telecommunication Networks
- Industrial & Military
- Parallel optical interconnect between PC Cards and patch panels
- Interconnection for O/E modules
- Optical Switch interframe connections

FEATURES

- Precision molded MT ferrule
- High precision guide pins for exact alignment
- Compact design, up to 12 fiber ribbons
- IEC 61754-7 Compliant*
- Telcordia GR-1435-CORE compliant*
- Polishing does not require diamond film

MPO Connector



MPO Male Connector
Multimode



MPO Female Connector Singlemode
Single Mode Low Loss



MPO with Ribbon Fiber Boot
Singlemode

CODE	HOOK COLOR	BOOT
701 Male	1 Green (SM)	1 Ribbon Fiber
702 Female	3 Beige (MM 62.5/125)	2 Ruggedized Cable
	4 Yellow (SM Low Loss)	4 Round Cable
	5 Aqua (OM3 50/125)	

ORDER CODE example: **702 - 12**

Note:

1. *When terminated using SENKO recommended procedures.
2. Custom configurations available upon request.

MPO/MT



- Note:
1. Low loss and Super Low Loss ferrules are available only for 8 and 12 fiber.
 2. 24 Fiber is Thermoset material.
 3. Custom configurations available upon request.

CODE	FERRULE TYPE	FERRULE HOLES	MATERIAL
MT	2 SM Standard for Angle Polish	1 4-Fiber	P Thermoplastic (PPS)
	3 SM Low Loss for Angle Polish	2 8-Fiber	
	4 MM Flat Polish	3 12-Fiber	
	5 SM Super Low Loss for Angle Polish	5 24-Fiber	

ORDER CODE example: **MT - 2 - 3 - P**

MPO

Adapters



MPO Adapter with Flange



MPO Adapter No Flange

- Note:
1. Custom configurations available upon request.

ADAPTER CODE	TYPE
777 Standard	1 Black
778 No Flange	

ORDER CODE example: **777 - 1**

MPO

Crimp Tool



- Note:
1. Other termination tools and accessories are available upon request.
 2. Assembly instructions are provided with all connector kits.

CRIMP TOOL CODE	TYPE
CRT	601 MPO Connector
	602 MPO Round

MT-RJ Connector

The singlemode or multimode MT-RJ products available from HUAKE are used in two fiber applications and are well suited for high density applications. The MT-RJ connectors utilize precision molded MT ferrules pioneered by NTT, together with precision metal guide pins and precise housing dimensions to ensure fiber alignment when mating.

The MT-RJ is reliable and simple to terminate. The MT-RJ Adapter comes standard in black, with additional colors available upon request. An optional MT-RJ Adapter with SC style housing is also available for applications where SC footprints are required.

SPECIFICATION	SM	MM
Insertion Loss	< 0.2dB typical	< 0.25dB typical
Return Loss	≥ 45dB typical	
Durability	< 0.1dB typical change, 500 matings	
Operating Temperature	-40 to +75°C	

Specifications shown above were obtained using HUAKE recommended products and procedures.

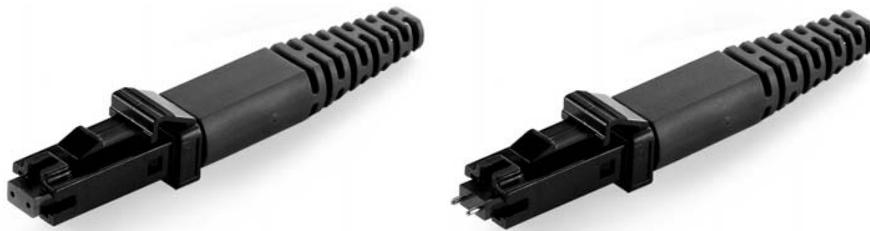
APPLICATIONS

- Asynchronous Transmission Mode (ATM)
- Gigabit Ethernet
- CATV, Video and Multimedia
- Active Device/ Transceiver Interface
- Premise Installations
- Telecommunication Networks
- Industrial
- Military
- Parallel optical interconnect between PC Cards and patch panels
- Interconnection for O/E modules
- Optical Switch interframe connections

FEATURES

- Precision molded MT ferrule
- High precision guide pins for exact alignment
- Duplex ferrule
- Plug-jack (RJ-45) design
- TIA/EIA 568-A compliant*
- Polishing does not require diamond film

MT-RJ Connector



Note:

1. When terminated using SENKO recommended procedures.
2. Custom configurations available upon request.

CODE	HOUSING COLOR	BOOT	BOOT COLOR
801 MT-RJ Female	1 Black	1 3.0mm Cable Round	1 Black
802 MT-RJ Male		4 1.8mm Duplex Zip Cable Boot	
		5 2.0mm Duplex Zip Cable boot	

ORDER CODE example: **801 - 141**

MT-RJ Adapter



MT-RJ Standard Adapter



MT-RJ Adapter with SC Footprint

Note:
Custom configurations
available upon request.

ADAPTER CODE	COLOR
888 Standard	1 Black
890 SC Footprint with Flange	1 Black
891 SC Footprint with No Flange	2 Beige
	3 Blue

ORDER CODE example: **891 - 1**

MT-RJ Ferrule and Guide Pin



MT-RJ ferrule

Note:
Custom configurations
available upon request.

PIN CODE	TYPE	MATERIAL
MTRJ	S Singlemode 126µm	P Thermoplastic (PPS)
MTRJ	M Multimode 126.5µm	

PIN CODE	TYPE	TOLERANCE	MATERIAL
GP	2 MT-RJ	1 Multimode	1 Stainless Steel
		2 Singlemode	

ORDER CODE example: **GP - 23 - 2**

MT-RJ Crimp Tool



103 MT-RJ Connector, 3.0 mm and Zip Cables

Note:
1. Other termination tools
and accessories are
available upon request.
2. Assembly instructions
are provided with all
connector kits.

CRIMP TOOL CODE	TYPE
CRT	103 MT-RJ Connector 3.0mm round and Zip cable

Attenuators

APPLICATIONS

- EDFA
- DWDM
- Long-haul
- Wide-Area Networks
- Metro
- High power

FEATURES

- One piece housing construction including LC & MU for better side load performance
- Metal-ion doped fiber (continuous)
- High durability
- Attenuation levels ranging from 1dB to 30dB

Note:
Custom configurations available upon request.

SPECIFICATION	
Return Loss	≥ 55dB (UPC) ≥ 65dB (APC)
Attenuation Tolerance	1 to 10dB : ±0.5, 11 to 30 dB : ±5%
Operational Wavelengths	1310, 1490, and 1550nm
Operating Temperature	-40 to +75°C

Specifications shown above were obtained using HUAKE recommended products and procedures.



FC Attenuator



FC APC Attenuator



LC Attenuator



MU Attenuator



SC Attenuator



SC APC Attenuator



ST Attenuator

CONNECTOR	TYPE	ATTENUATION LEVEL	ATTENUATION TOLERANCE
ATN Dope Fiber Attenuators	432 SC APC	01 1dB	1 Premium
	532 FC APC	02 2dB	
	632 SC UPC	03 3dB	
	732 FC UPC	04 4dB	
	832 ST UPC	05 5dB	
	1332 MU SPC	06 6dB	
	1432 MU UPC	07 7dB	
	1532 LC UPC	08 8dB	
		09 9dB	
		10 10dB	
		12 12dB	
		15 15dB	
		20 20dB	
		25 25dB	

ORDER CODE example:.

ATN - 632 - 04 - 1

Terminators

HUAKE fiber optic terminators use doped fiber designs or other proprietary designs to eliminate unwanted back-reflection. The terminators are available in FC and SC with SPC, UPC or APC polishes, and also in small form factor design including LC and MU with SPC and UPC Polishes.

SPECIFICATION	
Return Loss	≥ 55dB (UPC) ≥ 65dB (APC)
Operating Temperature	-40 to +75°C



FC Terminator



SC Terminator



ST Terminator



MU Terminator



LC Terminator

APPLICATIONS

- DWDM upgrade ports
- Network system receiver open ports
- Dark fiber upgrade ports

FEATURES

- Metal-ion doped fiber (continuous)
- High durability
- Custom configurations

CODE	TYPE	POLISH	DESIGN
TRM	1 SC	2 UPC	1 Doped fiber
	2 FC	3 APC	2 Off-set
	3 ST		
	4 LC		
	5 MU		

ORDER CODE example: **TRM - 1 - 3 - 2**

LC-MU Hybrid

Adapter



CODE	ADAPTER STYLE	SLEEVE
M90	1 Simplex	01 Zirconia
		02 Phosphor Bronze

ORDER CODE example: **M90 - 102**

Note:
Custom configurations
available upon request.

LC-SC Hybrid

Adapters



CODE	STYLE	COLOR	SLEEVE
990 LC-SC	1 Simplex	1 Blue	3 Zirconia

ORDER CODE example: **990 - 113**

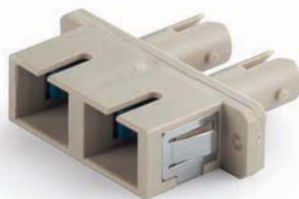
Note:
Custom configurations
available upon request.

SC-ST Hybrid

Adapters



SC-ST Simplex Adapter with
Rectangular Flange



SC-ST Duplex Adapter, with Flange



SC-ST Adapter with square flange

CODE	APPLICATION	SLEEVE
283 Square Flange Simplex (metal)	1 For PC Connector	01 Zirconia Straight Split
286 Rectangular Flange, Simplex (metal)		02 Phosphor Bronze
288 Rectangular Flange, Duplex (metal)		
289L Rectangular Flange, Duplex, Blue* (plastic)		
289T Rectangular Flange, Duplex, Beige* (plastic)		

ORDER CODE example: **288 - 102**

Note:
1. All adapters listed
above are made with
metal housing with the
exception of the 289
Series, which is made
with polymer housing.
2. Custom configurations
available upon request.
3. * For No Flange option,
add NF to order code.
Available for 289L and
289T adapters only.

FC-SC Hybrid

Adapters



FC-SC Adapter with square flange



FC-SC Adapter with rectangular flange

CODE	KEY WIDTH	SLEEVE
282	Square Flange 1 For PC Connector: 2.15+0.05/-0	01 Zirconia Straight Split
285	Rectangular Flange 2 For APC Connector: 2.05 +/- 0.02	02 Phosphor Bronze

ORDER CODE example: **282 - 101**

Note:
Custom configurations
available upon request.

FC-ST Hybrid

Adapters



FC-ST Adapter with square flange



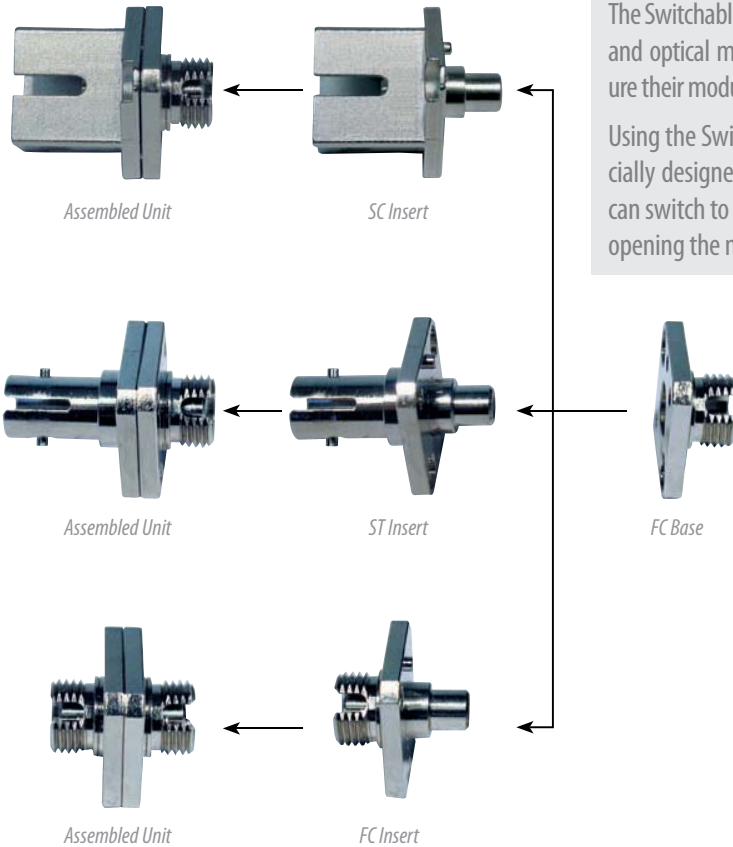
FC-ST Adapter with rectangular flange

CODE	KEY WIDTH	SLEEVE
284	Square Flange 1 For PC Connector: 2.15+0.05/-0	01 Zirconia Straight Split
287	Rectangular Flange	02 Phosphor Bronze

ORDER CODE example: **284 - 101**

Note:
Custom configurations
available upon request.

Switchable Adapter



The Switchable Adapter allows test equipment and optical module manufacturers to configure their modules for one adapter type (FC).

Using the Switchable Adapter base, and specially designed adapter inserts, the end user can switch to ST, SC or FC connectors without opening the module to replace the adapter.

APPLICATIONS

- Telecommunications networks
- Metro networks
- CATV Networks
- Fiber optic test & measurement equipment

FEATURES

- Switchable adapter interface, eliminating need for hybrid cable assemblies
- Easy to clean and maintain
- High precision alignment
- Low insertion loss*

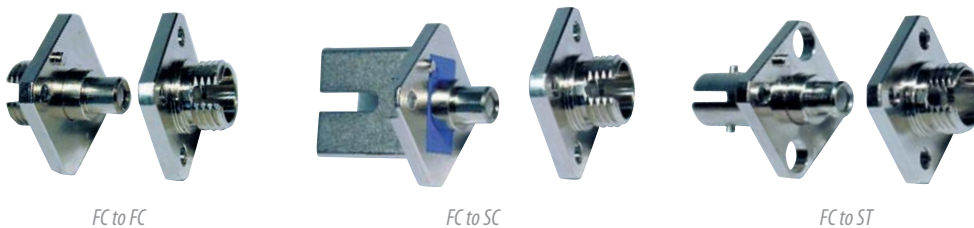
CONFIGURATIONS

- FC/PC to FC/PC
- FC/APC to FC/APC
- FC/PC to SC/PC
- FC/APC to SC/APC
- FC/PC to ST/PC

Note:
When following SENKO recommended procedures.

EASY TO CLEAN AND MAINTAIN

The Switchable Adapter allows the end user to properly clean and maintain both connectors on each side of the bulkhead, as well as the adapter sleeve, without removing the entire adapter from the panel.



CODE	SLEEVE CODE	KEY WIDTH CODE
321 FC to FC Switchable Adapter	1 Zirconia Straight Split	01 For PC Connector 2.15 +0.05/-0
322 FC to ST Switchable Adapter	2 Phosphor Bronze	02 For APC Connector 2.05 ±0.02
323 FC to SC Switchable Adapter		

CODE	PART NUMBER	SLEEVE	KEY WIDTH
FC Switchable Adapter Insert	UA-50007-101 PC	Zirconia	2.15/2.20
	UA-50007-102 APC	Zirconia	2.03/2.07
ST Switchable Adapter Insert	UA-50008-101	Zirconia	
SC Switchable Adapter Insert	UA-50009-101 PC	Zirconia	
	UA-50009-102 APC	Zirconia	